

Colorado Department of Health Care Policy and Financing

Accessing Home and Community Based Services Overview

Inaugural Neuro-Inclusive Housing Summit 2024
October 28, 2024

Agenda

- Long Term Services & Supports Overview
- Case Management Agencies (CMA)s
- Financial Eligibility
- How to Access Waivers
- Waivers
- Services

Home & Community Based Services Impacts Lives







Long-Term Services and Supports Overview

What are Long-Term Services and Supports?



At Home (e.g. personal or family home; group homes; assisted living facilities)



In Community (e.g. day programs; supported employment)



Within Facilities (e.g. nursing homes; intermediate care facilities)

Who Receives Long-Term Services & Supports?

13%



Children & Adolescents

ages 20 & younger
& qualifying former
foster care youth

43%



Adults

ages 21-64

44%



Older Adults

ages 65 or
older

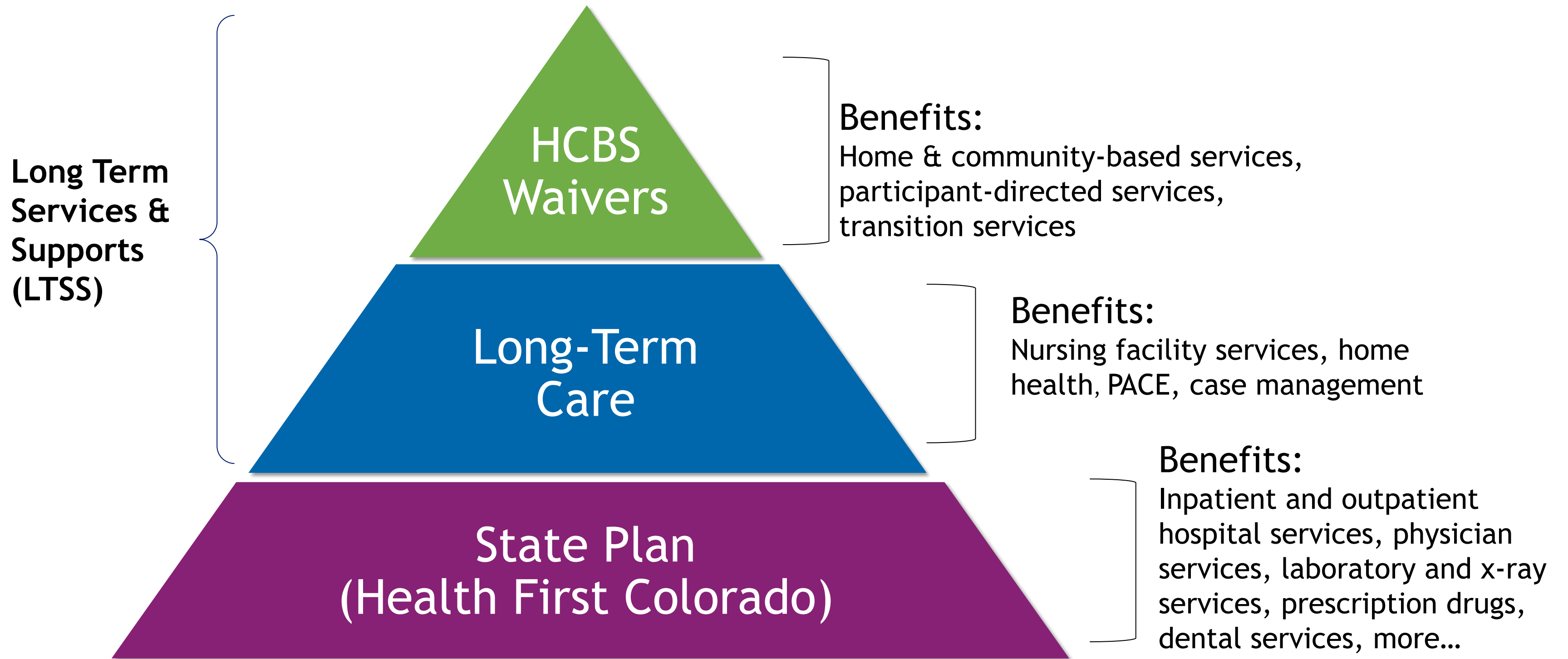
Cross Disability

- **Physical Disabilities** - e.g., Spinal Cord Injury, Parkinson's disease
- **Cognitive Disabilities** - e.g., I/DD, Brain Injury, Dementia
- **Mental Health Disorders** - e.g., schizophrenia, bipolar

86% have a **chronic condition**
(compared to 29% of all Health First
Colorado members)

37% have **5 or more** chronic conditions

Health First Colorado Benefits



HCBS Eligibility

Eligibility



- Financial Criteria
 - Managed by County Human/Social Services
- SSA Disability Criteria
 - Managed by County Human/Social Services
- Level of Care Needed
 - Conducted by Case Management Agency
 - Uses Level of Care Assessment to determine if an institutional setting would be necessary if not for HCBS
 - Assess targeting criteria

Level of Care

- **Hospital Level of Care**

- ☐ Member's needs are similar to that of a person in a hospital.
- ☐ They have acute care needs or their condition is unstable and unpredictable.

- **Nursing Facility Level of Care**

- ☐ Member's needs are similar to that of a person in a nursing facility.
- ☐ They require regular medical care, in home services at least once every 30 days, and oversight of a physician to maintain stability.

- **Intermediate Care Facility for Individuals with Intellectual Disabilities (ICF-IID) Level of Care**

- ☐ Member's needs are similar to that of a person in an ICF-IID facility.
- ☐ They require regular medical care and rehabilitation.

Targeting Criteria as determined by the CMA

- Includes:

- Age Range
- Diagnoses
- Injuries
- Region

Example:

DD Waiver participants must:

- Be over 18 years old
- Have a Developmental Disability Determination
- Require access to support and services 24 hours a day

- Participants may qualify for multiple HCBS waivers
- Case managers must be familiar with all waivers to best inform participants of all of their options
- Participants and families select option that works best for them

Developmental Disability Determination

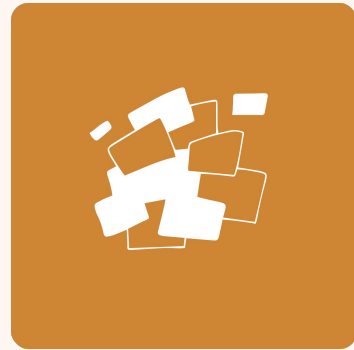
- Used to determine eligibility for waivers and state general funded programs serving individuals with I/DD - Includes CES, CHRP, SLS, DD, FSSP
- Completed by the local CMA - requires IQ or Adaptive Functioning testing
 - Manifested before the person reaches 22 years of age
 - Substantial disability that is attributable to an I/DD or related conditions which include Prader-Willi syndrome, cerebral palsy, epilepsy, autism or other neurological conditions when such conditions result in impairment of general intellectual functioning or adaptive behavior similar to that of a person with an intellectual and developmental disability.
- A person **shall not** be determined to have a developmental disability if it can be demonstrated such conditions are attributable to only a physical or sensory impairment or a mental illness.

Case Management Agencies

Core CMA Responsibilities

- Intake and referral
- Determine functional eligibility for long-term services and supports (LTSS)
- Develop and monitor Service Plans
- Coordinate and authorize long-term services and supports
- Aid in determining appropriate services and Level Of Care
- Assist individual in identifying the waiver that best meets needs

Case Management Redesign



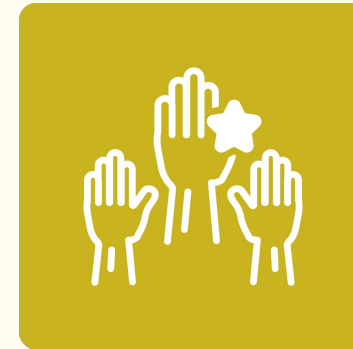
New Structure

A more person-centered approach with **each agency serving people with all disabilities in their geographic area** with a rate structure and a single information management system that supports quality



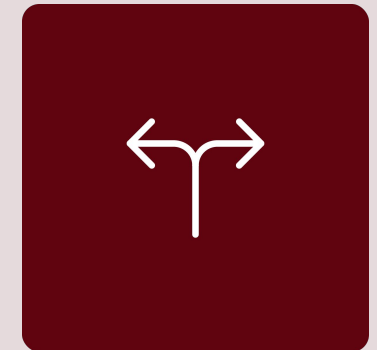
Knowledge

Training for agencies to **serve all members in a culturally competent manner** through a new Learning Management System (LMS) and direct agency support



Accountability

Public-facing score cards and appropriate caseloads to **ensure consistent, quality case management**



Conflict-Free

Case management and service delivery done by separate entities unless a rural exception is granted; meeting federal requirements and opening doors to additional program expansion and enhancement

Case Management Agencies Receiving an Intent to Award Letter by County/Defined Service Area

Reset

County

Zip Code

Enter a value

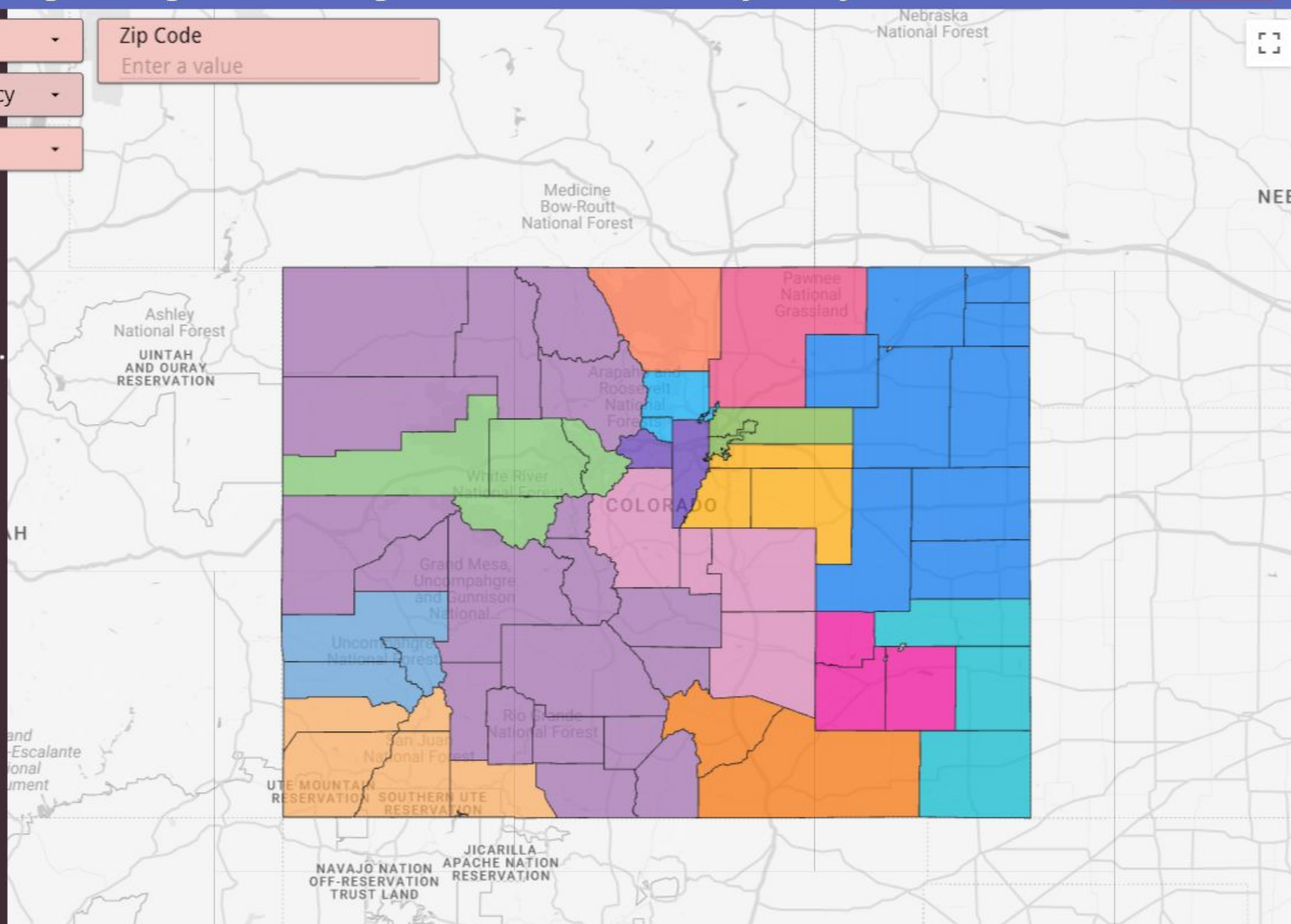
Case Management Agency

Designated Service Area

*Subject to change
pending protest
decisions*

Case Management Agen...

- Northeastern Colorad...
- Prowers County Publi...
- Otero County
- Las Animas County
- Developmental Pathw...
- Rocky Mountain Hum...
- Jefferson County
- Adult Care Manageme...
- Weld County
- Foothills Gateway, Inc.
- The Resource Exchang...
- Rocky Mountain Healt...
- Garfield County
- Montrose County
- Community Connectio...



Financial Eligibility

Enrollment Process: LTSS Financial Criteria

A applicant must meet all five LTC eligibility criteria prior to LTC being approved

- Identity & Citizenship
- Disability
- Income
- Resource
- Level of Care

Enrollment Process: LTSS Financial Criteria Application

- An applicant who is not already receiving Medicaid assistance, must submit a [Medicaid Application](#) that is complete and signed, paper, PEAK, in-person.
- A member who is already receiving a Medicaid program (SSI, MAGI, MSP) can submit a 1-page LTC request form
- An Authorized Representative form can be completed on the full application or a 1-pager. This allows an Authorized Representative to inquire and assist with the application process.
- For household applicants under the age of 18, all household members are required to be listed on the application.

Enrollment Process: PEAK Application



Home

Explore benefits ▾

Find resources ▾

Get help ▾

[Español](#)

Sign in

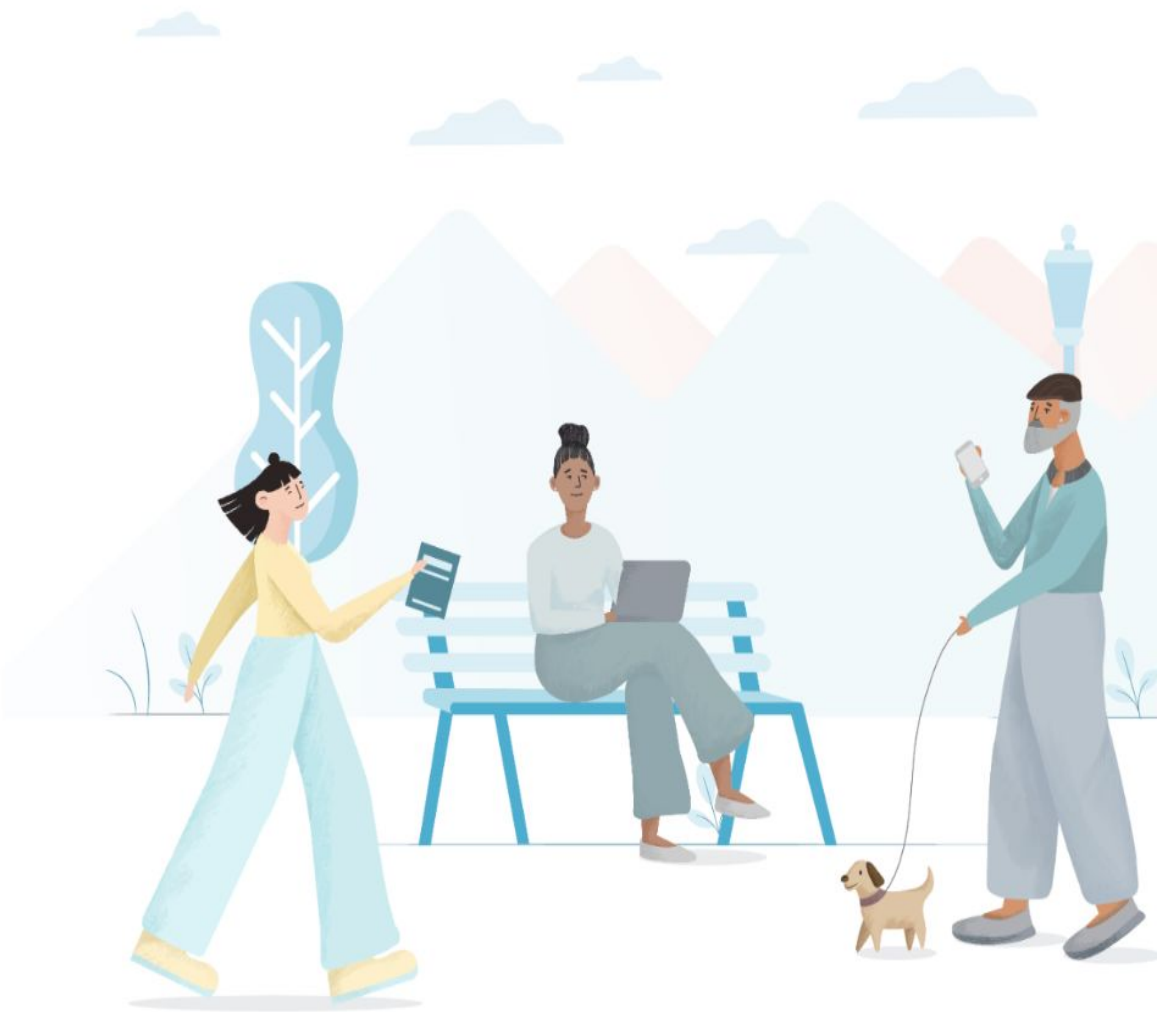
**Colorado PEAK is the place
to apply for and manage
benefits online**

Use PEAK to apply for or manage your medical, SNAP, cash
or other State of Colorado benefits.

Apply for benefits

Create an account

Have an account? [Sign in](#)



COLORADO
Department of Health Care
Policy & Financing

Enrollment Process: Medicaid Application

Application for Health Insurance & Help Paying Costs



Apply faster online at: **Colorado.gov/PEAK**
 ConnectforHealthCO.com

See inside

- Things to Know ii - iii
- Application 1 - 16
- Privacy Statement 17
- Worksheets 18 - 35
- Where to mail your application 36 - 40
- Glossary 41 - 43

Having health insurance can help give you peace of mind and stay healthy. With insurance, you will know you and your family can get health care when you need it. **Fill out this application to see if you qualify for:**

- Free or low-cost public health insurance from Health First Colorado (Colorado’s Medicaid Program) or the Child Health Plan

Who can use this application?

Anyone can use this application. Applying will not affect your immigration status or chances of becoming a permanent resident or citizen.

Call us to get connected to free help in other languages

If someone is helping you fill out this application, you may need to complete **Worksheet A** (page 18 - 19).
For a list of languages we can assist in, see **Things to Know**. If you need help in a language other than English, call and tell the customer service representative the language you need.
Llame a nuestro centro de servicio gratis para ayuda o para obtener una copia de esta formulario en Español.

Step 2: Person 1 (continue with yourself)

16. *Are you pregnant? ☐ Yes ☐ No If Yes, how many babies are expected?
Estimated due date (mm/dd/yyyy)?

17. Are you applying for health coverage? ☐ Yes (If Yes, answer all of the following questions.) ☐ No (If No, skip to question 32.)

18. Do you live with at least one child under the age of 19, and are you the main person taking care of this child?

☐ Yes

Questions 20-22 are important for indicating intent to apply for Long Term Services and Supports (LTSS)

20. *Do you have a medical, physical, mental, or developmental condition that has lasted, or is expected to last, more than 12 months, including blindness? ☐ Yes ☐ No

21. *Do you have a medical, physical, mental, or developmental condition that causes you to regularly need help with some or all of your self-care activities (such as bathing, dressing, eating, using the bathroom)? ☐ Yes ☐ No

22. *Do you need to move to a nursing home, acute care, hospital, group home, mental health institution or long-term care facility within the next 30 days, or do you need in-home health care to stay in your home? ☐ Yes ☐ No

If you have answered “Yes” to either question 20, 21, 22, or if you qualify for Medicare, you have the option to complete **Worksheet B** (pages 20 - 24) to find out if you qualify for health coverage for individuals who have a disability, are 65 and older, and/or who are blind.

Enrollment Process: LTSS Financial Criteria

Disability

A member meets requirements if they:

- Are 65 or older* and/or
- Have a disability determination from the Social Security Administration or Health First Colorado
- Complete the Health First Colorado [Disability Application](#)

*For those 65 or older applying for Working Adults with Disabilities (WAwD) with HCBS, a disability determination is required

Disability Application

County use only:

County

Date of application

**This Health First Colorado (Colorado's Medicaid program)
Disability Determination Application
must be submitted to your county office.**

Only completed and signed applications will be processed.

IF YOU NEED HELP

If you need help with this application, contact your county department of human services. Please complete as much as you can before contacting your county technician. Find your county's contact info at CO.gov/cdhs/contact-your-county.

HOW TO COMPLETE THIS APPLICATION

The information you give on this application will be used to decide if you meet the disability criteria for Health First Colorado (Colorado's Medicaid program) benefits. Colorado also allows people to qualify for limited disability if they are employed. Your financial eligibility will be determined separately from this application. **Please remember that having a disability does not guarantee you will qualify for Health First Colorado enrollment.**

- If you ever applied to the Social Security Administration (SSA) for Disability Benefits, **include copies of all letters and notices from SSA about your disability application.**
- **DO NOT LEAVE ANSWERS BLANK.** If you do not know the answer, or the answer is "none" or "does not apply," please write: "don't know" or "none" or "does not apply."

Enrollment Process: LTSS Financial Criteria

Income

- Only income of the LTC applicant is considered when evaluating LTC eligibility
 - Income from the applicant's spouse is not considered or counted towards the LTC applicants income limits
 - For LTC applicants under the age of 18, parents, guardians, or other household income is not considered towards the applicant's income limit
- LTC applicants gross income must be under the 300% SSI income limit, for 2024 the monthly income limit is \$2,829
- If a client's income exceeds the current monthly income for LTC but is below the average cost of the LTC institution for their specific region, they can still be found eligible with an approved Income Trust

Enrollment Process: LTSS Financial Criteria

Resource/Asset

Single Person Applying: \$2000

Both Couples Applying: \$3000

Married with a non-applicant spouse: \$154,140 (2024 limit) in available resources

Some assets and income do not count toward these limits, such as personal belongings, an automobile, irrevocable burial trusts, and a primary home.

- For LTC applicants under the age of 18, parents, guardians, or other household resources/assets are not considered towards the applicant's resource limit

Financial Criteria

Buy-In Programs

ABLE Accounts

People with disabilities who work and who earn too much money to qualify for Medicaid programs can pay a sliding scale, monthly premium to access Health First Colorado services and LTSS. (automatic process)

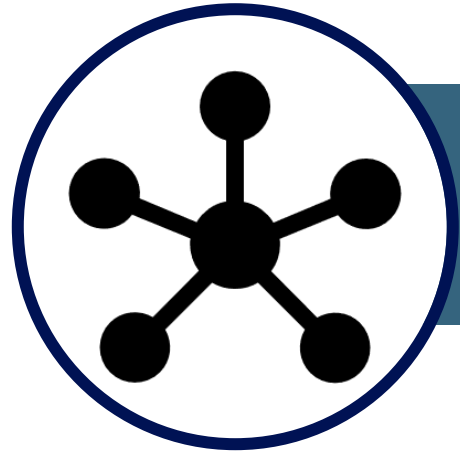
- [Buy-In Program for Working Adults with Disabilities](#)
- [Buy-In Program for Children with Disabilities](#)

In 2024, a Colorado ABLE account allows a member to:

- Save up to \$18,000 annually from any source (including earned income, unearned income like benefits, and gifts from friends and family)
- Save an additional \$14,580 annually from earned income (including salaries, wages, tips, and professional fees for work you perform)
- Hold a total account balance of up to \$500,000
- Deduct contributions from state taxes
- More info at [CO ABLE Accounts](#) and [Disability Benefits 101](#)

How to Access a Waiver

3 Main Aspects to Access



Contacting the appropriate local area CMA to establish functional eligibility



Choosing which waiver best meets the individual's needs



Accessing [PEAK](#) website or local County DHS to establish financial eligibility

Enrollment Timeline

- CMA Timelines
 - 2, 5, or 10 days to complete an initial Level of Care assessment for eligibility depending on where the member is at the time of the referral
 - Hospital, Skilled Nursing Facility, Community
 - For individual who require a Developmental Disability Determination, this timeline will start after the Determination is complete
 - Up to 90 days to provide documentation, option for 90 day extension
 - CMA has 30 days to make determination after all documentation is received
- County Timelines
 - 45 days to process financial eligibility determination once Level of Care assessment for eligibility is received from the CMA
- ARG ARBOR Disability Determination Timeline
 - Additional 45 days to process this application if required
 - [Disability Determination Services DHS](#)

Additional Considerations

There may be additional assessments that are needed - know that some may be face to face. The assessor may need to know about court involvement and other items.

- Developmental Disability Determination
- [SIS Assessment](#)
 - Completed for enrollment into HCBS-SLS and HCBS-DD waiver only
 - Determines support needs and used to determine which standardized rate will be reimbursed for services to the person.
- SSI Application
 - [Starter Kits](#)
 - Pays benefits based on financial need.

What If Someone Doesn't Qualify

The CMA will help you access other resources
Those include but are not limited to:

- Appeal Rights - functional and financial
- State General Fund programs (FSSP)
- Regional Accountable Entity
- Local I/DD Funding (Mill Levy)
- Local ARC or Advocacy Groups

For more information you can go to
<https://hcpf.colorado.gov/appeals>

Key Takeaways

- For many people, Long Term Services & Supports (LTSS) have less restrictive income requirements to support older adults and people with disabilities with non-medical services.
- [New webpage](#) called **Learn about LTSS** for community-driven resources to support Home & Community-Based Services (HCBS) awareness and enrollment is available.
- Your [Case Management Agency \(CMA\)](#) is your best resource/contact for Long Term Services & Supports.

Waivers

HCBS Waivers in Colorado

Adult Waivers

Brain Injury Waiver (BI)

Community Mental Health Supports Waiver (CMHS)

Developmental Disabilities Waiver (DD)*

Elderly, Blind and Disabled Waiver (EBD)

Complementary Integrative Health(CIH)

Supported Living Services Waiver (SLS)

Children's Waivers

Children's Extensive Support Waiver (CES)

Children's Home and Community Based Services Waiver (CHCBS)

Children's Habilitation Residential Program Waiver (CHRP)

Children with Life Limiting Illness Waiver (CLLI)

Waiver Charts and Flowcharts

- Waiver Charts

- Provide a side-by-side comparison of key components and eligibility requirements of each waiver
- Includes program contact information

- Flowcharts

- Provide participants and families a decision-tree to help them understand all of the program options



www.colorado.gov/hcpf/long-term-services-and-supports-training

Transitioning to Adult Waivers

- . [Transition from Children's Waivers to Adult Waivers Checklist](#)
- . Timelines
 - 1 year or more before transition
 - 60 days before transition
 - 30 days before transition
- . Program Information & Resources
- . Other Programs/Service Delivery Options

Brain Injury Waiver (BI)

- For persons living with a brain injury diagnosis
- Must be 16 years old or older and meet hospital or nursing facility level of care
- Must have sustained the injury prior to the age of 65
- Contact local Case Management Agency

www.colorado.gov/hcpf/brain-injury-waiver-bi

- Adult Day Services
- Behavioral Programming and Education
- Consumer Directed Attendant Support Services (CDASS)
- Day Treatment
- Home Delivered Meals
- Home Modification
- Independent Living Skills Training (ILST)
- Mental Health Counseling
- Non-Medical Transportation
- Peer Mentorship
- Personal Care
- Personal Emergency Response System
- Remote Support Technology
- Respite Care
- Specialized Medical Equipment and Supplies/Assistive Devices
- Substance Abuse Counseling
- Supported Living Program
- Transitional Living Program
- Transition Setup

Community Mental Health Supports Waiver (CMHS)

- For persons living with a diagnosis of major mental illness
- Must be 18 years old or older and meet nursing facility level of care
- Contact local Case Management Agency

www.colorado.gov/hcpf/community-mental-health-supports-waiver-cmhs

- Adult Day Services
- Alternative Care Facilities
- Consumer Directed Attendant Support Services (CDASS)
- Home Delivered Meals
- Homemaker Services
- Home Modifications
- Life Skills Training
- Mental Health Transition Living Homes
- Peer Mentorship
- Non-Medical Transportation
- Personal Care
- Personal Emergency Response System
- Remote Supports Technology
- Respite Care
- Specialized Medical Equipment
- Transition Setup

Developmental Disabilities Waiver (DD)

- For persons living with a developmental disability who need access to services and supports 24 hours a day
- Must be 18 years old or older and meet Intermediate Care Facility for Individuals with Intellectual Disabilities (ICF-IID) level of care
- This waiver has a waiting list
- Contact local Case Management Agency

www.colorado.gov/hcpf/developmental-disabilities-waiver-dd

- Behavioral Services
- Day Habilitation Services (Specialized Habilitation, Supported Community Connections)
- Dental
- Home Delivered Meals
- Peer Mentorship
- Non-Medical Transportation
- Prevocational Services
- Residential Habilitation Services and Supports (24-hour individual or group)
- Specialized Medical Equipment and Supplies
- Supported Employment
- Transition Setup
- Vision

Elderly, Blind and Disabled Waiver (EBD)

- For elderly persons with a functional impairment (aged 65+) or blind or physically disabled persons (ages 18-64), or persons diagnosed with HIV/AIDS
- Must meet nursing facility level of care
- Contact local Case Management Agency

www.colorado.gov/hcpf/elderly-blind-disabled-waiver-ebd

- Adult Day Services
- **Alternative Care Facilities**
- Consumer Directed Attendant Support Services (CDASS)
- Home Delivered Meals
- Homemaker Services
- Home Modifications
- In-Home Support Services
- Life Skills Training
- Medication Reminder
- Non-Medical Transportation
- Peer Mentorship
- Personal Care Services
- Personal Emergency Response System
- Remote Support Technology
- Respite Care Services

Supported Living Services Waiver (SLS)

- For persons living with intellectual or developmental disabilities who can live independently with limited supports or who, if they need extensive supports, are receiving a high level of support from other sources, such as family
- Must be 18 years old or older and meet ICF-IID level of care
- Contact local Case Management Agency

www.colorado.gov/hcpf/supported-living-services-waiver-sls

- Assistive Technology
- Behavioral Services
- Day Habilitation Services
- Dental Services
- Home Delivered Meals
- Home Modifications
- Homemaker Services
- Life Skills Training
- Mentorship
- Non-Medical Transportation
- Peer Mentorship
- Personal Care Services
- Personal Emergency Response System (PERS)
- Pre-vocational Services
- Professional Services (Hippotherapy, Massage and Movement Therapy)
- Respite Services
- Remote Supports
- Specialized Medical Equipment & Supplies
- Supported Employment
- Transition Setup
- Vehicle Modifications
- Vision Services

Complementary Integrative Health Waiver (CIH)

- For persons living with a spinal cord injury, Multiple Sclerosis, Cerebral Palsy, Spina Bifida, Muscular Dystrophy, and Brain Injury (ambulation requirement)
- Must be 18 years old or older and meet hospital or nursing facility level of care
- Services available in 5 Denver Metro area counties
- Contact local Case Management Agency

www.colorado.gov/hcpf/spinal-cord-injury-waiver

- Adult Day Services
- Complementary and Integrative Health Services (Acupuncture, Chiropractic, Massage)
- Consumer Directed Attendant Support Services (CDASS)
- Home Delivered Meals
- Home Modification
- Homemaker Services
- In-Home Support Services
- Life Skills Training
- Medication Reminder
- Non-Medical Transportation
- Peer Mentorship
- Personal Care
- Personal Emergency Response Systems
- Remote Support Technology
- Respite Care
- Specialized Medical Equipment & Supplies
- Transition Setup

Children's Extensive Support Waiver (CES)

- For children with a developmental disability and intensive behavioral or medical needs
- Must be ages birth - 17 years old and meet Intermediate Care Facility for Individuals with Intellectual Disabilities (ICF-IID) level of care
- Contact local Case Management Agency

- Adaptive Therapeutic Recreational Equipment and Fees
- Assistive Technology
- Community Connector
- Home Accessibility Adaptations
- Homemaker Services
- Parent Education
- Personal Care Services (State Plan)
- Professional Services (Hippotherapy, Massage and Movement Therapy)
- Respite Services
- Specialized Medical Equipment & Supplies
- Vehicle Adaptations
- Vision Therapy

www.colorado.gov/hcpf/childrens-extensive-support-waiver-ces

Children's HCBS Waiver (CHCBS)

- For medically fragile children who would otherwise be ineligible for Health First Colorado (Colorado's Medicaid Program) due to parental income and/or resources exceeding limit
- Must be ages birth - 17 years old and meet hospital or nursing facility level of care
- Contact local Case Management Agency

- Wellness Education Benefit
- In-Home Support Services (IHSS)

www.colorado.gov/hcpf/childrens-home-and-community-based-services-waiver-chcbs

Children's Habilitation Residential Program (CHRP)

- For children and youth with a developmental disability and very high needs that put them at risk of, or in need of, out of home placement
- Must be ages birth - 20 years old and meet ICF-IID level of care
- Contact local Case Management Agency

- Community Connection Services
- Habilitation Services
 - Cognitive Services*
 - Communication Services*
 - Independent Living Training*
 - Personal Care Services*
 - Self-Advocacy Training*
 - Supervision Services*
 - Travel Services*
- Intensive / Transition Support Services
 - Wraparound Plan or Monitoring
 - Child and Youth Mentorship
- Respite Services
- Professional Services (Hippotherapy, Massage and Movement Therapy)

www.colorado.gov/hcpf/childrens-habilitation-residential-program-waiver-chrp

* - Services marked by an asterisk are not billed separately but under the habilitation services and are part of residential services

Family Support Services Program

The Family Support Services Program (FSSP) provides support for families who have individuals with intellectual and developmental disabilities or developmental delays with costs that are beyond those normally experienced by other families. The primary purpose of the FSSP is to support individuals with intellectual and developmental disabilities or delays remaining within their own nurturing family setting and prevent out-of-home placements.

Who Qualifies?

Any individual with an Intellectual and Developmental Disability or Developmental Delay living with their family is eligible for FSSP.

Examples of Benefits and Services:

- Assistive Technology
- Environmental Engineering
- Medical and Dental Items
- Parent and Sibling Support
- Professional Services
- Respite
- Transportation

<https://www.colorado.gov/pacific/hcpf/family-support-services-program-fssp>

Home Accessibility Modifications and Adaptations

Home Accessibility Modifications and Adaptations are specific modifications, adaptations, changes, or improvements in your existing home setting which, based on your specific needs, are necessary to ensure your health, welfare, and safety, and enable you to function with greater independence in the home or to prevent institutionalization. All modifications must be the most cost-effective means of meeting the need.

Home Accessibility Modifications and Adaptations may include but are not limited to the following:

- Installing or building ramps
- Installing grab-bars and other Durable Medical Equipment (DME) as part of a larger Home Modification project
- Widening doorways
- Modifying bathrooms
- Modifying kitchen facilities
- Installing specialized electric and plumbing systems that are necessary to accommodate medically necessary equipment and supplies.

Regular homeowner maintenance and modifications that are not a direct benefit to you are not covered under the Home Accessibility and Modifications Adaptations benefit.

For the Children's Extensive Support (CES) and Supported Living Services (SLS) waivers, there is a combined \$10,000 maximum over the 5-year waiver period for the Assistive Technology, Home Accessibility Adaptations, and Vehicle Modifications benefits. This amount may be exceeded with prior approval.

For the Brain Injury (BI), Complementary and Integrative Health (CIH), Community Mental Health Supports (CMHS), and Elderly, Blind and Disabled (EBD) waivers, there is a \$14,000-lifetime maximum for the Home Accessibility Modifications and Adaptations benefit.

[Learn more about this benefit](#)

Waiver(s) which include this service:

[HCBS Waiver for Persons with a Brain Injury](#)

[HCBS Children's Extensive Support Waiver](#)

[HCBS Waiver for Community Mental Health Supports](#)

[HCBS Waiver for Complementary and Integrative Health](#)

[HCBS Waiver for Persons who are Elderly, Blind, and Disabled](#)

[HCBS Supported Living Services Waiver](#)

Services

Residential Setting Flexibility

Residential Services can be provided in a variety of ways.

Alternative Care Facilities

Alternative Care Facilities (ACF) provide assistive living services so you can stay in the community. Residences are licensed and certified.

Services include:

- 24-hour oversight
- Medication Administration
- Personal Care
- Homemaker Services

You pay the full cost of room and board and may have to share the cost of the services.

Waiver(s) which include this service:

[HCBS Waiver for Community Mental Health Supports](#)

[HCBS Waiver for Persons who are Elderly, Blind, and Disabled](#)

Supported Living Program (SLP)

The Supportive Living Program (SLP) is a specialized assisted living service for people with brain injuries. Residences are certified. Services include 24-hour oversight, assessment, training, and supervision of self-care, medication management, behavioral management, and cognitive supports. They also include interpersonal and social skills development.

You pay the full cost of room and board and may have to share the cost of the services.

Waiver(s) which include this service:

[HCBS Waiver for Persons with a Brain Injury](#)

Group and Individual Residential Support Settings

Residential Habilitation Services and Supports

Residential Habilitation Services and Supports help you stay safe and healthy and teach skills needed to live in the community. Services include assessment and evaluation, training materials, transportation, fees, and supplies. You can live in:

- Individual Residential Services and Supports (IRSS) has up to 3 people living together
- Group Residential Services and Supports (GRSS) has 4 to 8 people living together in a Residential Care Facility or Residential Community Home
- A qualified family home

Services in both IRSS and GRSS may include training in self-advocacy, independent living, money management, decision-making, and emergency assistance. Services may include counseling, behavioral therapy, and other therapeutic interventions. They may also include medical and health care services to meet your daily needs. These include giving medications, community access services, travel services, and supervision to help you stay safe.

Waiver(s) which include this service:

[HCBS Waiver for Persons with Developmental Disabilities](#)

Mental Health Transitional Living Homes

Mental Health Transitional Living Home (MHTL) services are available to members who are determined functionally eligible and enrolled in the HCBS Community Mental Health Supports (CMHS) waiver. The MHTL service addresses the need for a residential behavioral health setting for Medicaid members who need step-down, transitional living in the community post-institutionalization at the State's Mental Health Institutes. Staff is specifically trained to support members with severe and persistent mental illness who may experience mental health episodes.

Services include:

- 24-hour protective oversight
- Recreational and social opportunities
- Assistance with accessing the community
- Supervision of ADLs
- Medication management
- Life skills training

The member pays the full cost of room and board and may have to share the cost of the services.

Waiver(s) that include this service:

[HCBS Waiver for Community Mental Health Supports](#)



General HCBS Questions

HCPF_HCBS_Questions@state.co.us

General Medicaid Eligibility Questions

hcpf_medicaid.eligibility@state.co.us

Resources

My Rights - Member Resources

[Informational Memo 22-028 - HCBS Settings Final Rule - Videos for Members](#) - August 24, 2022

- [Part I: My Rights](#)
 - [Part II: Rights Modifications](#)
 - [Resource Sheet to Accompany Videos](#)
-
- [Part I: My Rights \(Spanish\)](#)
 - [Part II: Rights Modifications \(Spanish\)](#)
 - [Resource Sheet to Accompany Videos \(Spanish\)](#)

LTSS Programs Overview

Overview of all LTSS programs and links to more detail:

<https://www.colorado.gov/hcpf/long-term-services-and-supports-programs>

[Learn About LTSS](#) website

Waiver Charts and Flowcharts

- Waiver Charts

- Provide a side-by-side comparison of key components and eligibility requirements of each waiver
- Includes program contact information

- Flowcharts

- Provide participants and families a decision-tree to help them understand all of the program options



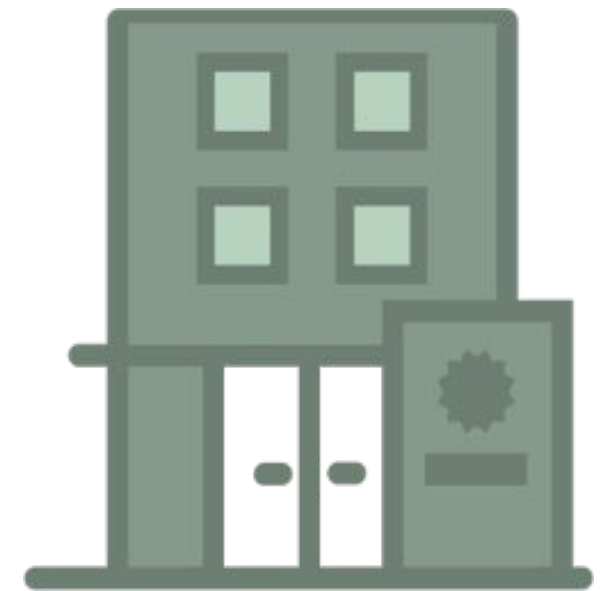
www.colorado.gov/hcpf/long-term-services-and-supports-training

Case Management Agency and County Contacts

Your [Case Management Agency \(CMA\)](#) is your best resource/contact for Long Term Services & Supports.

County Eligibility

www.colorado.gov/cdhs/contact-your-county



Rules and Regulations

8.7000 - Case Management, Services and Waiver rules

8.100 - Financial Eligibility for Medicaid

Adult Waivers Rules

Waiver regulations:

www.colorado.gov/hcpf/departments-program-rules-and-regulations

Department Waiver Rules, Colorado Code of Regulations:

- BI [10 CCR 2505-10, Section 8.515](#)
- CMHS [10 CCR 2505-10, Section 8.509](#)
- DD [10 CCR 2505-10, Section 8.500](#)
- EBD [10 CCR 2505-10, Section 8.485](#)
- SCI [10 CCR 2505-10, Section 8.517](#)
- SLS [10 CCR 2505-10, Section 8.500.90](#)



Children's Waivers Rules

Waiver regulations:

www.colorado.gov/hcpf/departments-program-rules-and-regulations

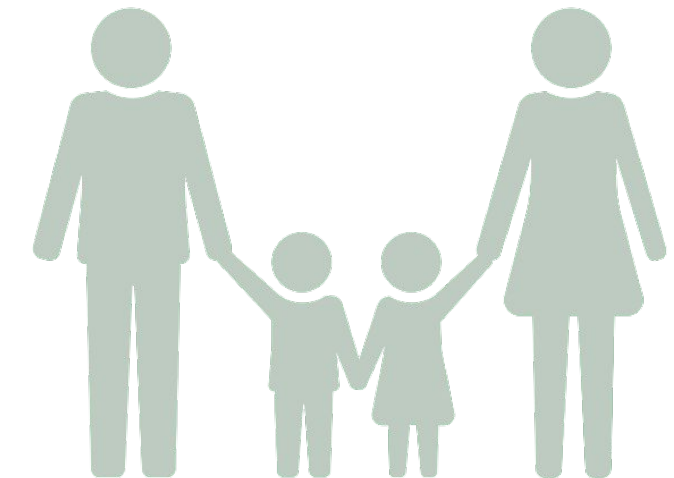
Department Waiver Rules, Colorado Code of Regulations:

CES [10 CCR 2505-10, Section 8.503](#)

CHCBS [10 CCR 2505-10, Section 8.506](#)

CHRP [10 CCR 2505-10, Section 8.508](#)

CLLI [10 CCR 2505-10, Section 8.504](#)



LTSS Web Resources

Learn About LTSS

<https://hcpf.colorado.gov/learn-about-ltss>

LTSS Training

www.colorado.gov/hcpf/long-term-services-and-supports-training

Health First Colorado Member Handbook

www.healthfirstcolorado.com/benefits-services/#member-handbook

Health First Colorado State Plan Benefits & Services

www.healthfirstcolorado.com/benefits-services

Long-Term Services and Supports Programs Website

www.colorado.gov/hcpf/long-term-services-and-supports-programs

Other Programs and Services

- Consumer Directed Attendant Support Services (CDASS)
 - www.colorado.gov/hcpf/consumer-directed-attendant-support-services
- In-Home Support Services (IHSS)
 - www.colorado.gov/hcpf/in-home-support-services
- Consumer Direct of Colorado (CDCO) - Training for CDASS and IHSS
 - www.consumerdirectco.com
- Health First Colorado Buy-In Program for Working Adults and Children with Disabilities
 - www.colorado.gov/hcpf/medicaidbuyinprograms
- Nursing Facilities
 - www.colorado.gov/hcpf/nursing-facilities
- Transition Services
 - www.colorado.gov/hcpf/transition-services

Children with Life-Limiting Illness Waiver (CLLI)

- For children with a life-limiting diagnosis
- Must be ages birth - 19 years old and meet hospital level of care
- Contact local Case Management Agency

- Expressive Therapy:
 - Art and Play Therapy
 - Music Therapy
- Massage Therapy
- Palliative/Supportive Care:
 - Care Coordination
 - Pain and Symptom Management
- Respite Care
- Therapeutic Services:
 - Bereavement Counseling
 - Therapeutic Life Limiting Illness Support - Individual/Family/Group

www.colorado.gov/hcpf/children-life-limiting-illness-waiver-clip